

Light efficiency:



Output: 10538 lm

Light quality:



Peak: 6290 cd

Color temperature:



Power: 79.3 W

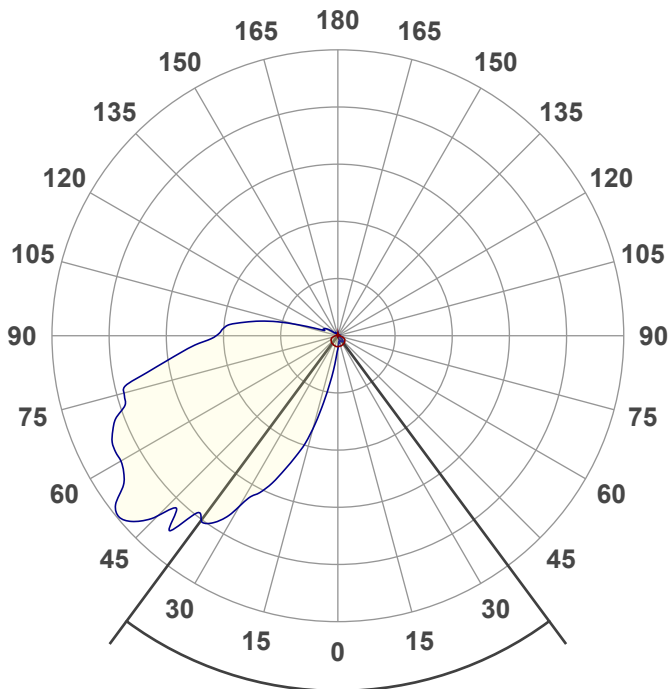
PF: 1.0

Product name:

WPGL2-50K75-H

Date and time:

5/3/2022 2:03:41 PM

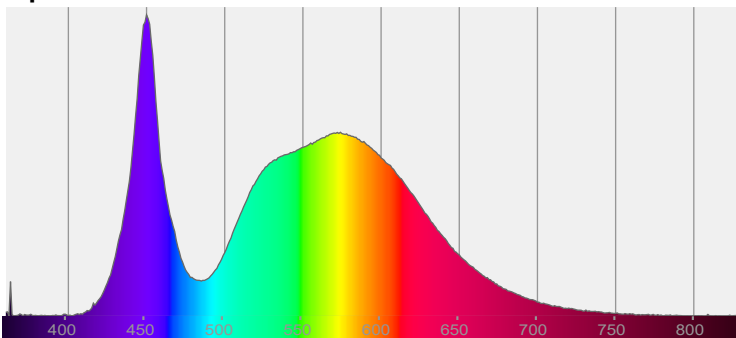


Beam angle **73°**

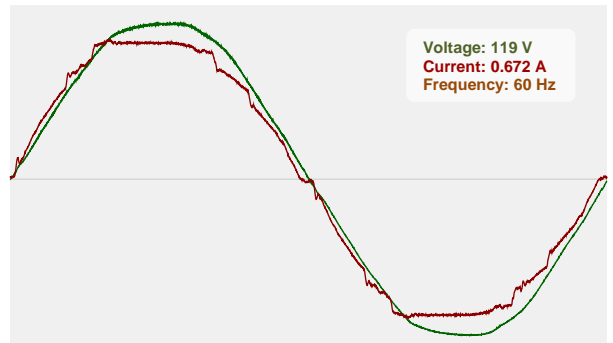


CIE 1931
x: 0.344
y: 0.356

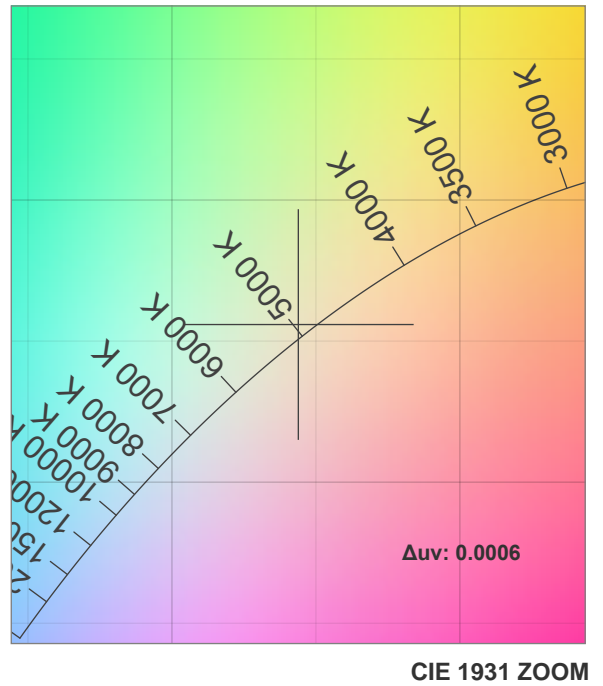
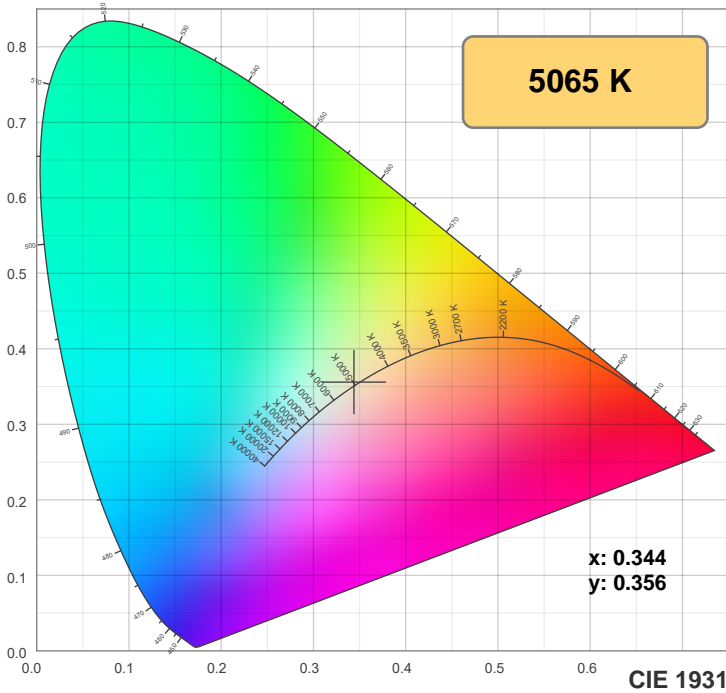
Spectra



Power

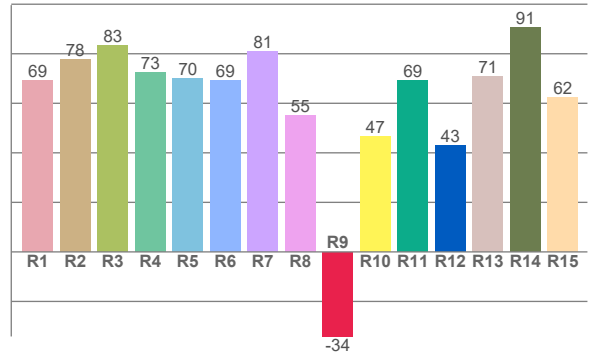
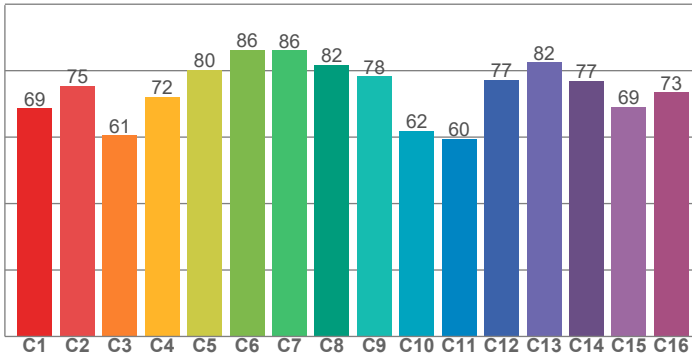


Color Specifications



TM30: 73.7

CRI: 72.3 (R1-R8)



CRI R values, only R1-R8 are used to calculate final CRI value

R1	R2	R3	R4	R5	R6	R7	R8	R9	R10	R11	R12	R13	R14	R15
69.3	77.7	83.4	72.6	70.0	69.1	80.8	55.0	-34.1	46.6	69.3	43.0	70.7	90.7	62.3

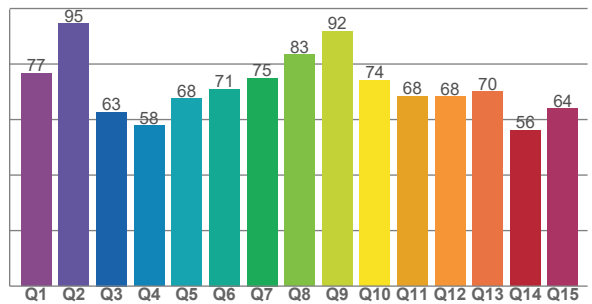
TM30 C values, 16 binned values out of total of 99 C values

C1	C2	C3	C4	C5	C6	C7	C8	C9	C10	C11	C12	C13	C14	C15	C16
68.6	75.5	60.5	72.1	80.3	86.3	86.1	81.8	78.3	62.0	59.5	77.2	82.5	76.9	69.1	73.4

CQS Q values

Q1	Q2	Q3	Q4	Q5	Q6	Q7	Q8	Q9	Q10	Q11	Q12	Q13	Q14	Q15
76.7	94.6	62.7	57.8	67.6	71.0	74.9	83.3	91.8	74.2	68.4	68.3	70.0	56.1	63.9

CQS: 70.1



Color parameters

Color temperature	Color rendering index	Red component	Color fidelity	Color gamut	Color quality scale	Color coordinate cie 1931	Color coordinate cie 1931	Color coordinate	Color coordinate	Color division from black body
CCT	CRI	CRI R9	TM30 Rf	TM30 Rg	CQS	x	y	u	v	Δuv
5065 K	72.3	-34.1	73.7	94.1	70.1	0.344	0.356	0.209	0.324	0.0006

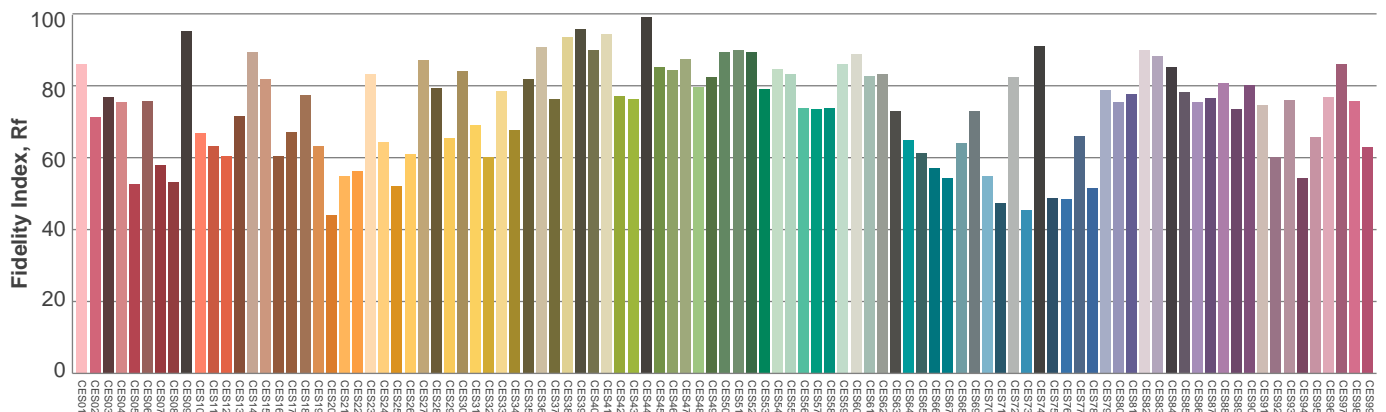
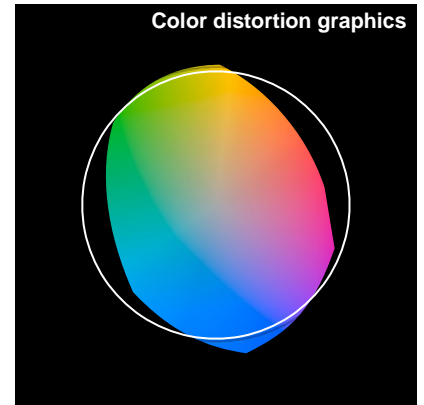
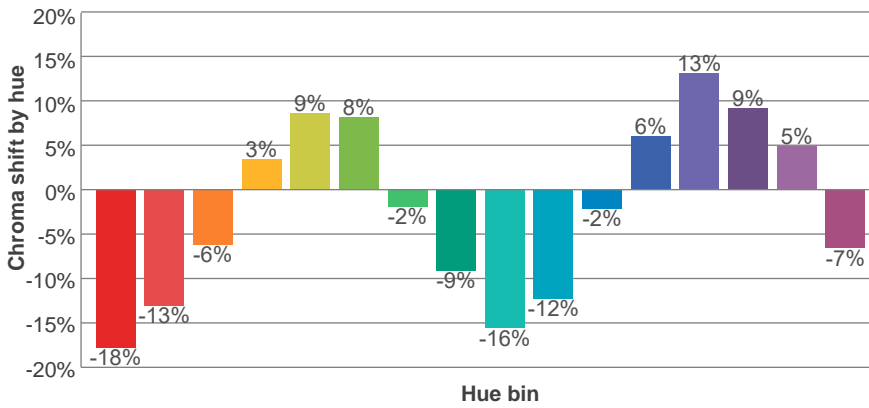
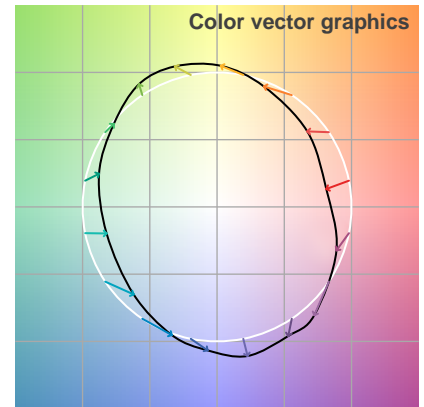
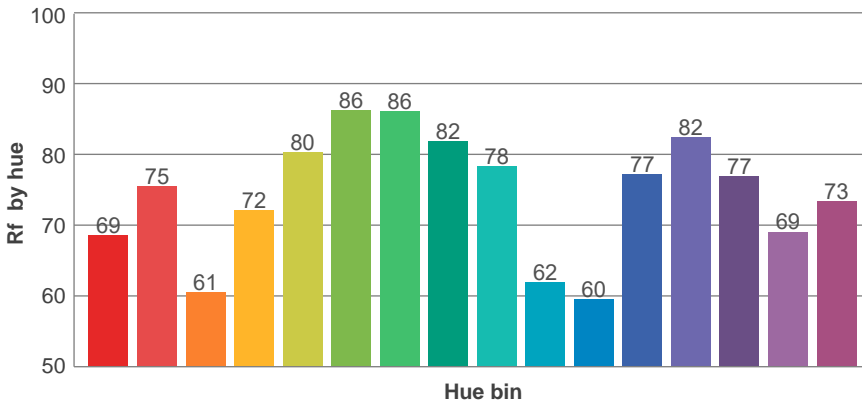
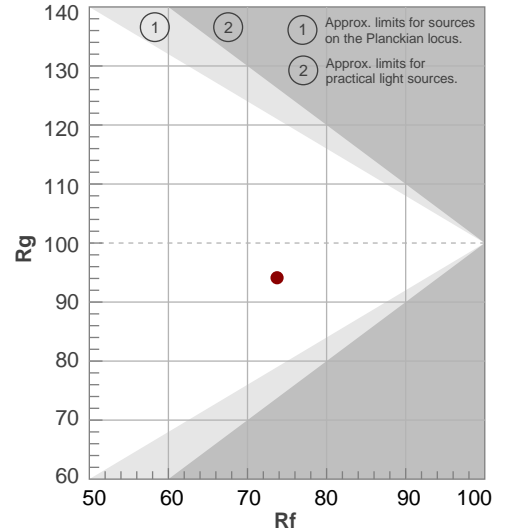


TM30 Report

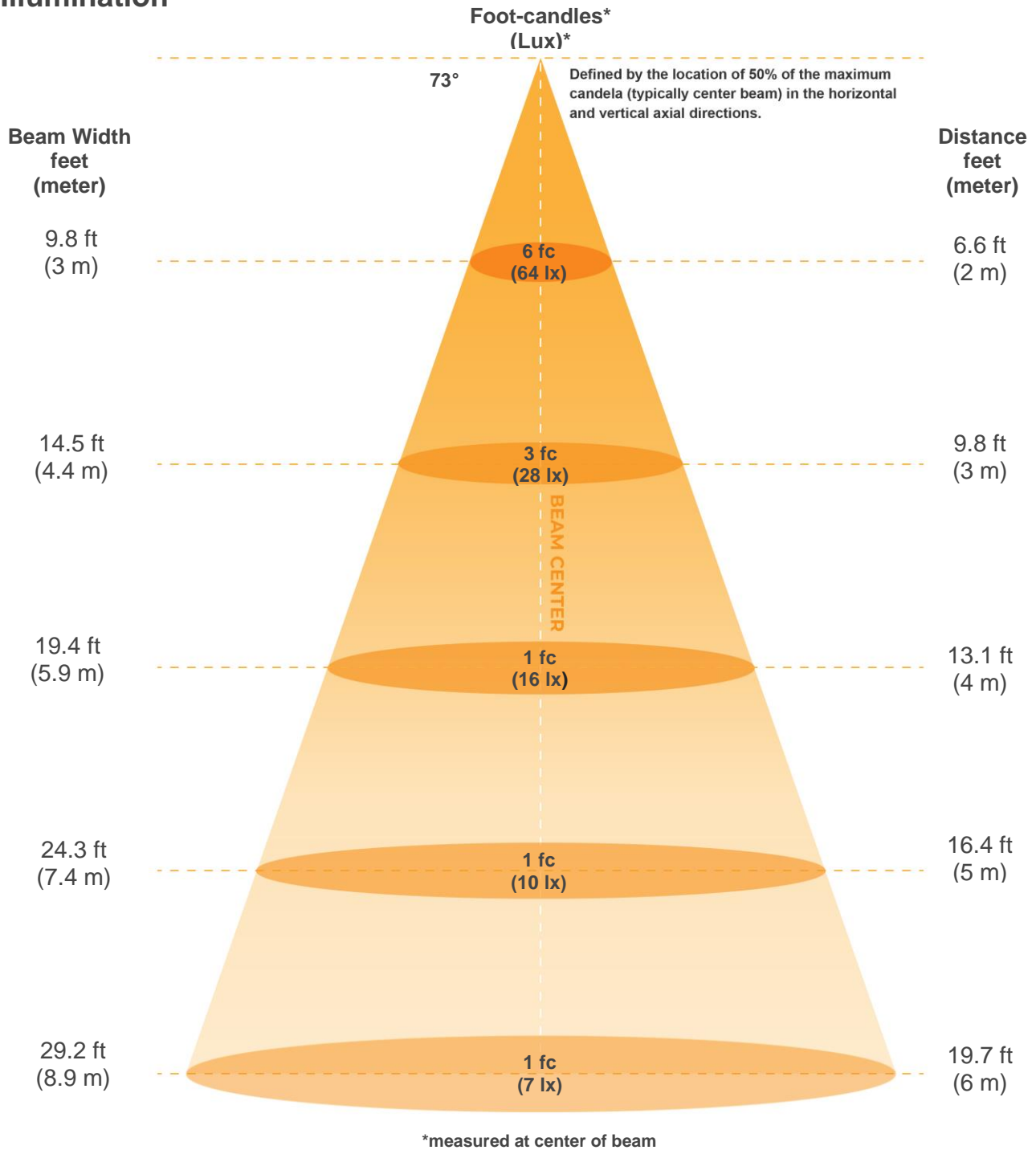
Rf 73.7
Fidelity index Rf

Rg 94.1
Gammut index Rg

Hue Bin	R _f	Graphic shifts (%)	
		Chroma	Hue
1	69	-18%	-3%
2	75	-13%	9%
3	61	-6%	21%
4	72	3%	18%
5	80	9%	10%
6	86	8%	-2%
7	86	-2%	-9%
8	82	-9%	-7%
9	78	-16%	3%
10	62	-12%	20%
11	60	-2%	25%
12	77	6%	14%
13	82	13%	1%
14	77	9%	-9%
15	69	5%	-27%
16	73	-7%	-14%



Illumination



Beam intensities from 1-20m

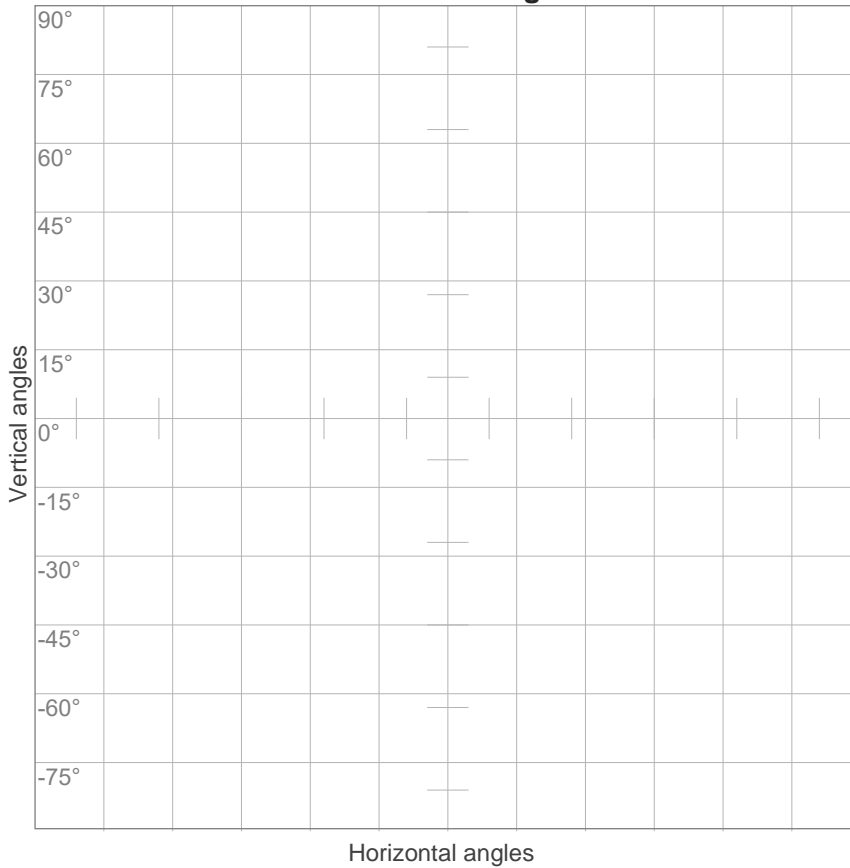
1m	2m	3m	4m	5m	6m	7m	8m	9m	10m	11m	12m	13m	14m	15m	16m	17m	18m	19m	20m
3.3ft	6.6ft	9.8ft	13.1ft	16.4ft	19.7ft	23ft	26.2ft	29.5ft	32.8ft	36.1ft	39.4ft	42.7ft	45.9ft	49.2ft	52.5ft	55.8ft	59.1ft	62.3ft	65.6ft
254lx	64lx	28lx	16lx	10lx	7lx	5lx	4lx	3lx	3lx	2lx	2lx	2lx	1lx	1lx	1lx	1lx	1lx	1lx	1lx
23.6fcd	5.9fcd	2.6fcd	1.5fcd	0.9fcd	0.7fcd	0.5fcd	0.4fcd	0.3fcd	0.2fcd	0.2fcd	0.2fcd	0.1fcd	0.1fcd	0.1fcd	0.1fcd	0.1fcd	0.1fcd	0.1fcd	0.1fcd

Beam angle 50%	Field angle 10%	Cutoff angle 2,5%	Intensity ratio in 120° cone	Intensity ratio in 90° cone
73°	119.2°	205°	44.9%	21.7%



ISO Diagrams

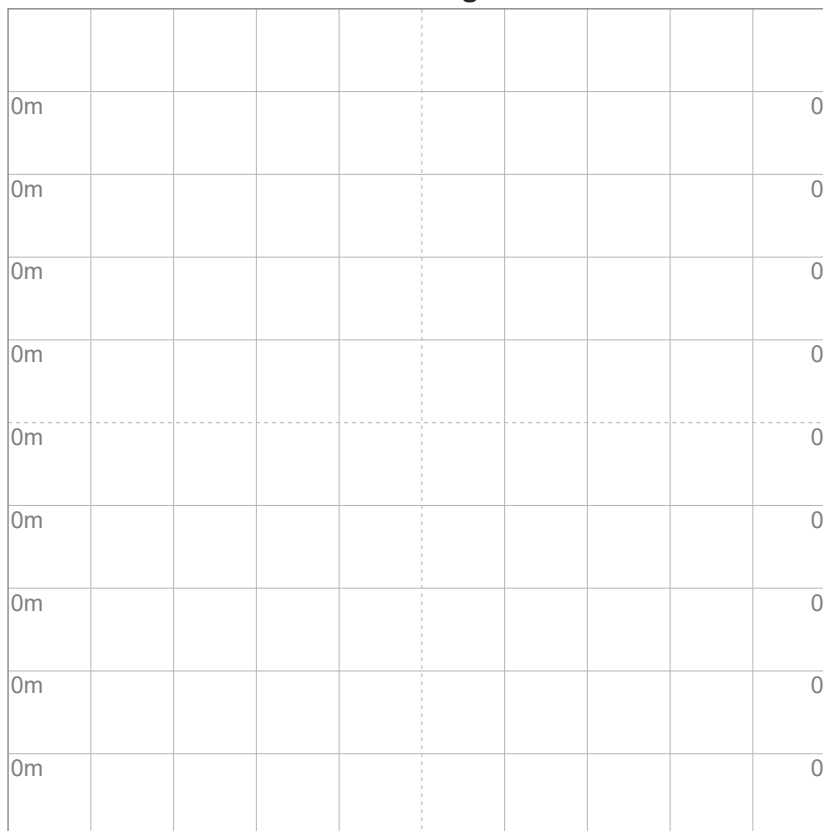
ISO candela diagram



10%	25 cd
20%	51 cd
30%	76 cd
40%	102 cd
50%	127 cd
60%	152 cd
70%	178 cd
80%	203 cd
90%	229 cd

Conditions:
 Number of c-planes: 16
 Candela at center: 254 cd

ISO lux diagram



3%	76.2m lx
5%	0.127 lx
10%	0.254 lx
30%	0.762 lx
50%	1.27 lx

Conditions:
 Number of c-planes: 16
 Lux at center: 2.54 lx

Lux distribution on a surface when lamp is mounted at 10 meters from the surface.

Mounting height: 10 meters (33 feet) UGR



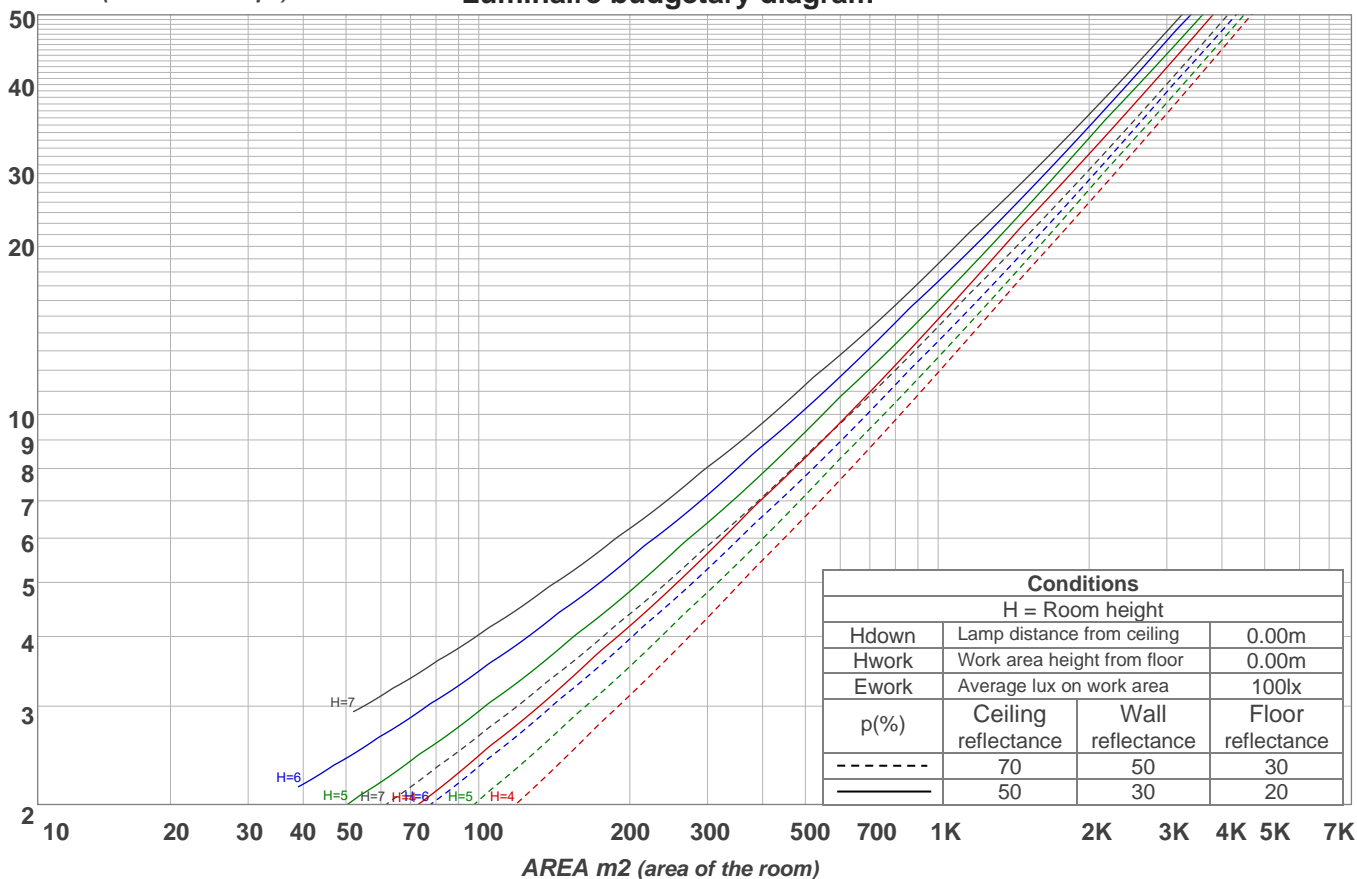
Light Planning

Coefficients of Utilization

Ceiling reflectance	80				70				50			30			10			0			
Wall reflectance	70	50	30	10	70	50	30	10	50	30	10	50	30	10	50	30	10	0			
Floor reflectance	20	20	20	20	20	20	20	20	20	20	20	20	20	20	20	20	20	20	20	20	0
RCR	(RCR: Room Cavity Ratio)																				
	Room Values are expressed as percentage of Lumens delivered to the task surface																				
0	116	116	116	116	112	112	112	112	104	104	104	97	97	97	90	90	90	87			
1	100	92	86	80	95	89	83	77	82	77	73	76	72	68	70	67	64	60			
2	88	76	67	59	83	73	65	57	67	60	54	62	56	51	57	52	48	44			
3	78	64	54	45	74	62	52	44	57	48	42	52	45	39	47	42	37	34			
4	70	55	44	36	66	53	43	35	48	40	33	44	37	31	41	34	29	26			
5	63	48	37	29	60	46	36	28	42	33	27	39	31	25	35	29	24	21			
6	58	42	32	24	55	40	31	23	37	28	22	34	27	21	31	25	20	17			
7	53	37	27	20	50	36	26	20	33	25	19	30	23	17	28	21	16	14			
8	49	33	24	17	46	32	23	17	30	22	16	27	20	15	25	19	14	12			
9	45	30	21	15	43	29	20	14	27	19	14	25	18	13	23	17	12	10			
10	42	27	19	13	40	26	18	12	24	17	12	23	16	11	21	15	10	8			

LAMPS (number of lamps)

Luminaire budgetary diagram



Zonal Lumen Summary

0°-10°	10°-20°	20°-30°	30°-40°	40°-50°	50°-60°	60°-70°	70°-80°	80°-90°
29.1 lm	176 lm	498 lm	946 lm	1394 lm	1691 lm	1704 lm	1572 lm	1152 lm
90°-100°	100°-110°	110°-120°	120°-130°	130°-140°	140°-150°	150°-160°	160°-170°	170°-180°
805 lm	322 lm	136 lm	66.0 lm	25.5 lm	11.7 lm	5.07 lm	2.88 lm	0.939 lm

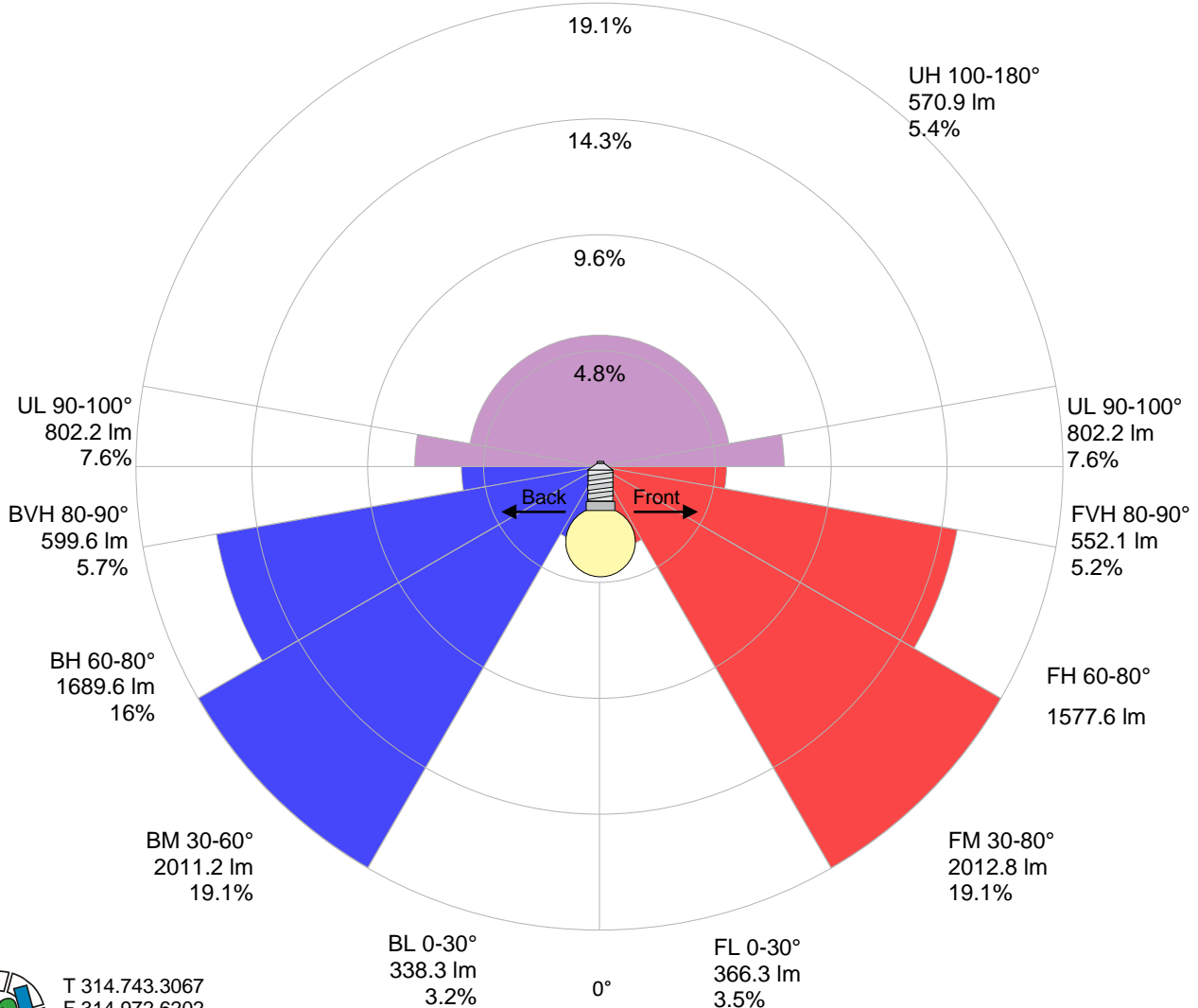


Road Report

LCS table

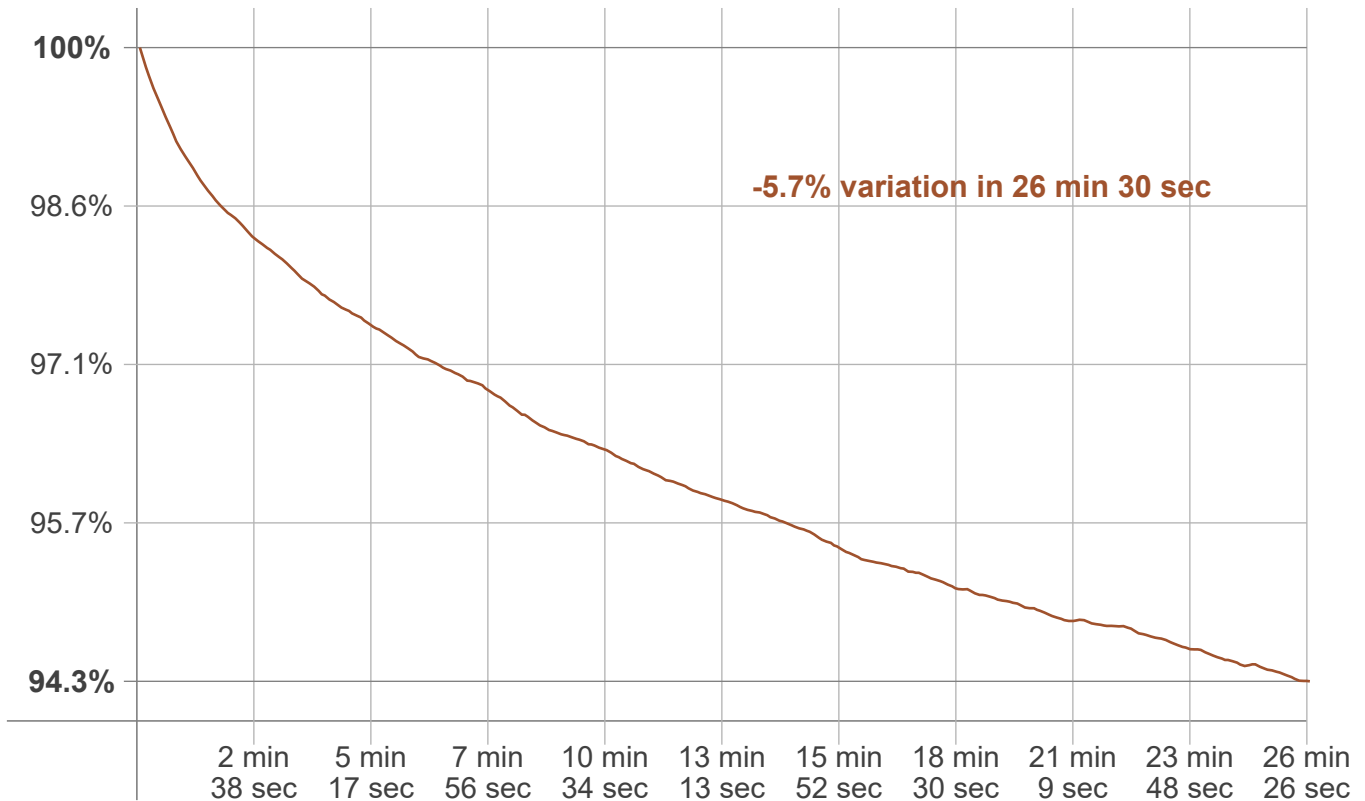
BUG rating:	B3 U4 G4	
Forward light	Lumens	Lumens %
Low(0-30):	366.3	3.5%
Medium(30-60):	2012.8	19.1%
High(60-80):	1577.6	15%
Very high(80-90):	552.1	5.2%
Back light		
Low(0-30):	338.3	3.2%
Medium(30-60):	2011.2	19.1%
High(60-80):	1689.6	16%
Very high(80-90):	599.6	5.7%
Uplight		
Low(90-100):	802.2	7.6%
High(100-180):	570.9	5.4%

LCS graph



Stabilization

Warmup curve



Warmup result

Warmup time:	Lamp stabilized in 26 min 30 sec
Warmup variation	-5.8%

Warmup conditions

Stable period:	15 min
Stable change max:	2.0%
Minimum time:	15 min

Color temperature change

CCT start	CCT change	CCT end
5014 K	+51 K	5065 K

Output change

Output start	Output change	Output end
11147 lm	-609 lm	10538 lm

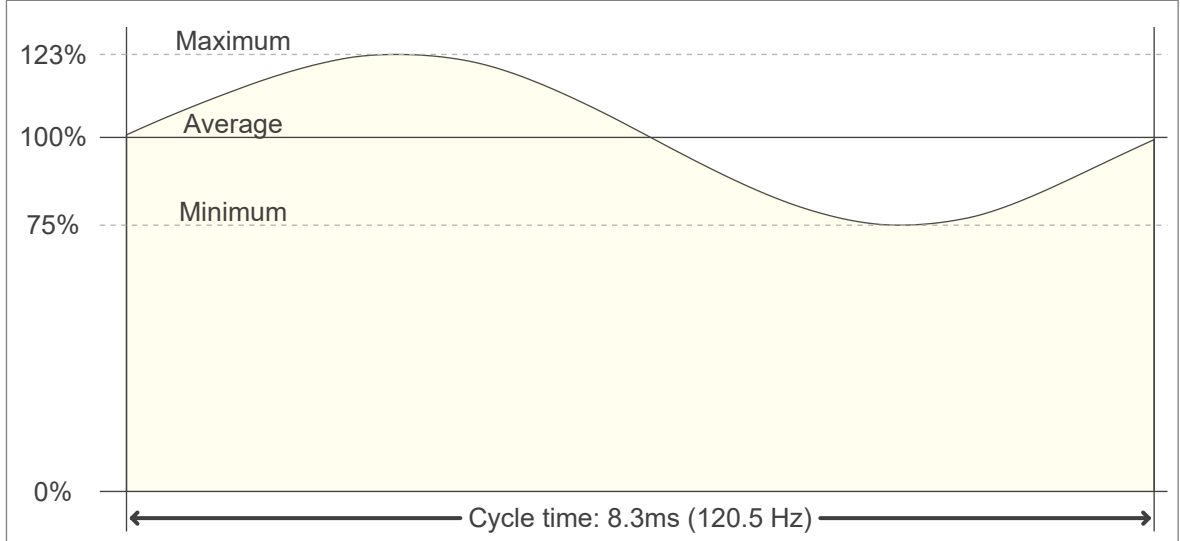


Flicker Specifications

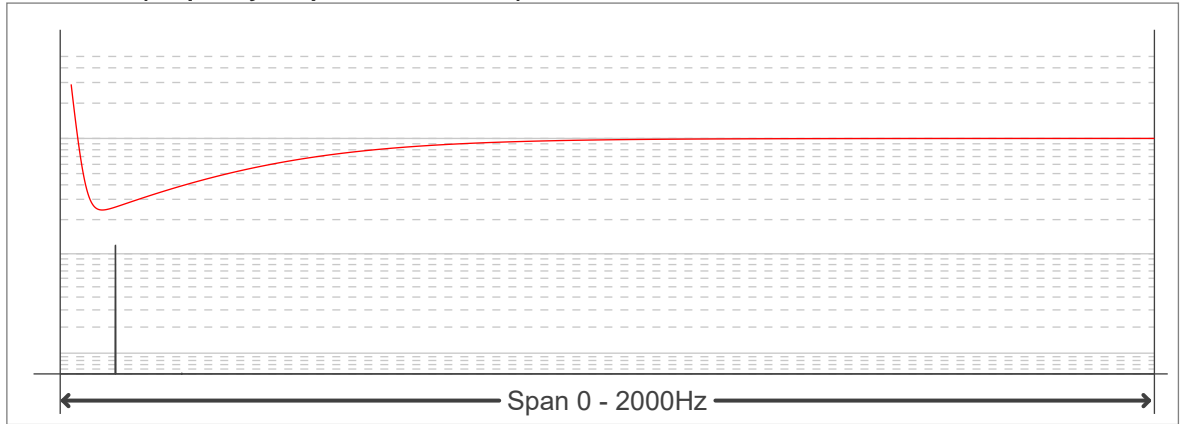
Flicker curve (complete sampled flicker signal)



Flicker frame (frame of one flicker period)



Flicker FFT (frequency scope of flicker curve)



Flicker results:

Flicker frequency:	120.48 Hz
Flicker index:	0.08
Flicker percentage:	24.41 %
SVM: (Visual flicker)	0.86

Flicker conditions:

Sample rate:	20000 samples/second
---------------------	-----------------------------

