

Contractor Type A InstantFit T8

16T8/LED/48-840/IF18/G 25/1

The InstantFit LED lamps provide hassle-free installation with simple lamp-for-lamp replacements. They deliver what we promise, with at least 40% energy savings, flicker-free performance, and the life you would expect. Other lamps claim compatibility but only InstantFit (UL Type A) has been proven to work with over 350 ballasts and drivers, delivering even light output, with proven energy savings and a long average lifetime. End users will be delighted being under these comfortable and high quality InstantFit lamps with no visible flicker and optimized optics. Energy managers will enjoy the InstantFit lamps too as they can count the savings delivered by our lamps. To enjoy more energy savings, the InstantFit lamps can be paired with the Advance TLED drivers to create a Type C system.

Product data

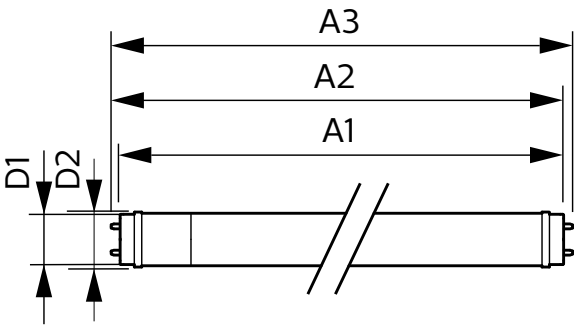
General Information		Color rendering index (CRI)	
Cap-Base	G13 [Medium Bi-Pin Fluorescent]	LLMF At End Of Nominal Lifetime (Nom)	80
Nominal lifetime	36,000 hour(s)		70 %
Switching Cycle	50,000	Operating and Electrical	
Lighting Technology	LED	Line Frequency	20K to 120K Hz
EU RoHS compliant	Yes	Input Frequency	20K to 120K Hz
Light Technical		Power Consumption	16 W
Color Code	840 [CCT of 4000K]	Wattage Equivalent	32 W
Beam Angle (Nom)	240 degree(s)	Starting Time (Nom)	0.5 s
Luminous Flux	1,800 lumen	Warm-up time to 60% light	0.5 s
Color Designation	Cool White (CW)	Power Factor (Fraction)	0.9
Correlated Color Temperature (Nom)	4000 K	Voltage (Nom)	120-277, 347 V
Luminous Efficacy (rated) (Nom)	112.00 lm/W	Temperature	
Color Consistency	<6	Ambient temperature range	-20 °C to 45 °C

Contractor Type A InstantFit T8

T-Case Maximum (Nom)	35 °C
Controls and Dimming	
Dimmable	No
Mechanical and Housing	
Bulb Finish	Frosted
Bulb Material	Glass
Product Length	1,200 mm
Bulb Shape	Tube, double-ended
Approval and Application	
Energy Saving Product	Yes

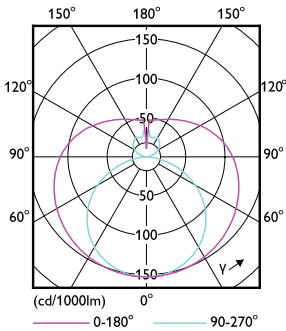
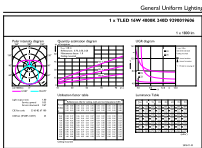
Approval Marks	RoHS compliance UL certificate
Energy Consumption kWh/1000 h	- kWh
Product Data	
Order product name	16T8/LED/48-840/IF18/G 25/1
Order code	929001960604
Numerator - Quantity Per Pack	1
Numerator - Packs per outer box	25
Material Nr. (12NC)	929001960604
Full product name	16T8/LED/48-840/IF18/G 25/1
EAN/UPC - Case	50046677542080

Dimensional drawing



Product	D1	D2	A1	A2	A3
16T8/LED/48-840/IF18/G 25/1	25.7 mm	28 mm	1,198 mm	1,205 mm	1,212 mm

Photometric data

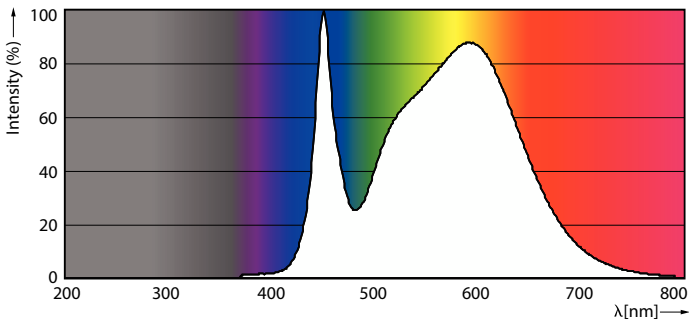


Accent Lighting Spots - 16T8/LED/48-840/IF18/G 25/1

Light Distribution Diagram - 16T8/LED/48-840/IF18/G 25/1

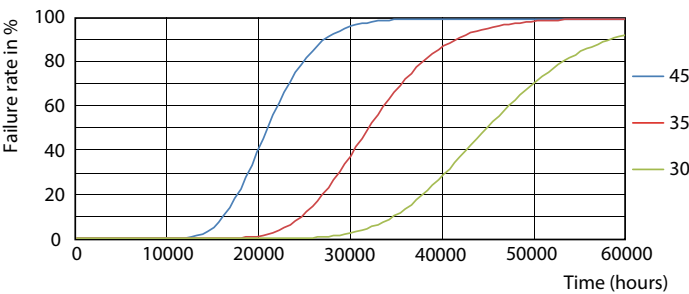
Contractor Type A InstantFit T8

Photometric data

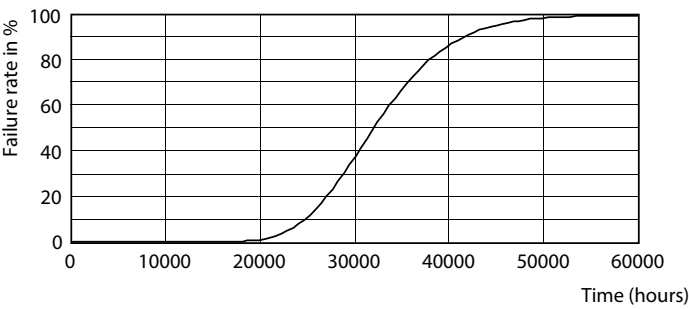


Spectral Power Distribution Colour - 16T8/LED/48-840/IF18/G 25/1

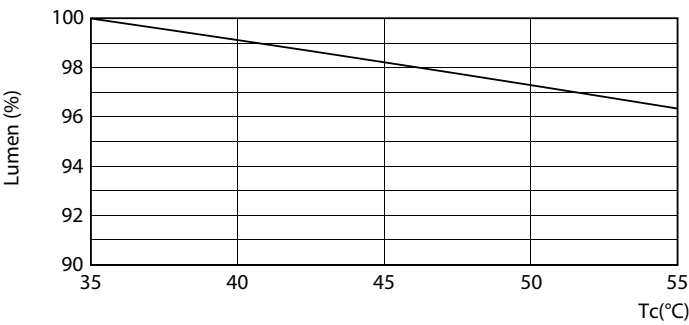
Lifetime



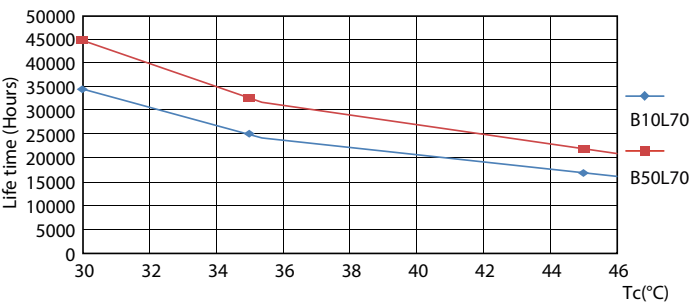
Life Expectancy Diagram - 16T8/LED/48-840/IF18/G 25/1



Life Expectancy Diagram - 16T8/LED/48-840/IF18/G 25/1



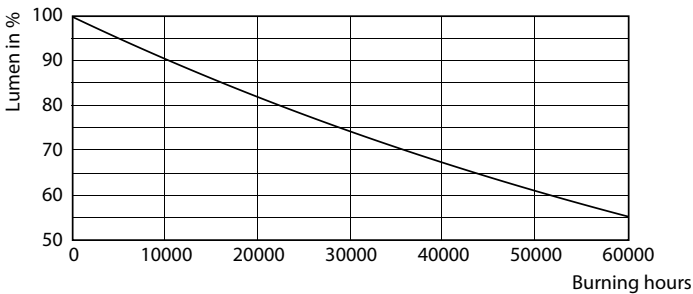
Lumen Maintenance Diagram - 16T8/LED/48-840/IF18/G 25/1



Life Expectancy Diagram - 16T8/LED/48-840/IF18/G 25/1

Contractor Type A InstantFit T8

Lifetime



Lumen Maintenance Diagram - 16T8/LED/48-840/IF18/G 25/1

